

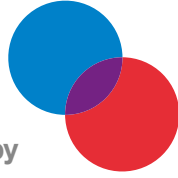


We see  
the **ability**  
within.

Annual General Meeting  
Time: 2.00pm  
Date: Thursday 27 October  
Place: Town Hall Reception Room

Annual Report | 2015 - 2016



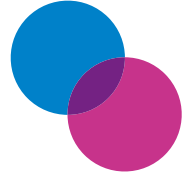


### **StGiles Therapy**

You can find us at Amy Road Launceston, and Gant Street, Lenah Valley. We are a highly skilled team of professionals that supports

- Physiotherapy,
- Occupational Therapy,
- Speech Pathology,
- Psychology and
- Social Work.

Our highly trained professional team are in touch with the latest developments.



### **StGiles PAT**

Offering specialist Speech Pathology and Occupational Therapy support to help you explore assistive technologies to suit your individual needs.



### **StGiles World of Giving**

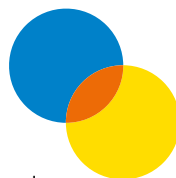
We are located at our Amy Road Head Office in Launceston and in Gant St Lenah Valley.

We are constantly in touch with the Tasmanian community, raising awareness and funds to go towards new play equipment, through to chair development. If you would like to help with fundraising, are part of a club or team or would like to personally volunteer your time or services we welcome your call.



### **StGiles Support Services**

To help you and your family along the way, we provide a wide range of personalised plans, accommodation, family support and respite services. It's an important part of what we do.



### **StGiles SEMAT**

We're a unique service offering customised seating, prescription and provision including wheelchairs, shower chairs, office and lounge seating.



# StGiles Society Inc.

## President

Mayor of Launceston,  
Alderman Albert van Zetten

## Board of Directors

### Chairman, Martin Rees

Mr Rees was elected chairman in 2015 and has been a director of St Giles since 1997. He is currently contracted to KPMG with a focus on providing commercial advice to a small number of corporate clients while undertaking valuation and other consulting assignments.

### Director of Finance, Ben Coull

Mr Coull was elected to the Board in 2010 and has served as Deputy Chairman since 2015. Ben is a partner at Synectic Group and is a Fellow of the Institute of Chartered Accountants

### Director, John Dent OAM

Elected to the Board in 2005, Mr Dent is our immediate past Chair. He is a registered land surveyor in private practice in Launceston and is a parent of two children, one of whom has a disability. Mr Dent has an active community life including former State President and National Vice President of Rural Youth. Through his involvement with the Launceston Rotary Club, he is a Paul Harris Fellow

### Director, Mike Lichtendonk

Mr Lichtendonk joined St Giles in 1992 serving the Board through his background in banking and finance

### Director, James McKee

Elected Director in 2010, Mr McKee has recently been appointed to the role of Director-Northern Cities Major Development Initiative.

### Director, Tiina Sexton

Ms Sexton joined the Board in May 2014 as its first representative from Southern Tasmania. She is an experienced non-executive director who has consistently demonstrated a strong ability in ethics and corporate governance.

### Director, Kym Goodes

Appointed to the Board in 2014, Ms Goodes holds the position of Chief Executive of TasCOSS. She has broad experience in the public and private sector and has a proven ability to operate at a conceptual and strategic policy level.

### Director, Anne Gott

Ms Gott is a practising solicitor in Devonport and is also a board member of Melaleuca Home for the Aged Inc.

### Director, Hon Justice Robert Pearce

Justice Pearce was elected to the Board in 2003 and is a member of the Northern Tasmanian Health and Medical Human Research Ethics Committee and is a Member of the Bench of the Tasmanian Supreme Court.

### Director, Rebecca Kelly

Dr Kelly was elected to the Board in 2015 and is a director of NRM Pty Ltd. She is vice president of Down Syndrome Tasmania.

## Chief Executive

**Ian R Wright**

## Executive Team

### Mark Deverell

Director-Service Delivery & Development

### Kirsty Bartlett Clark

Director-Service Innovation & Enhancement

### Amanda Bailey

Director-People & Culture

## Senior Management

### Philip Lynch

Chief Financial Officer

### Ally White

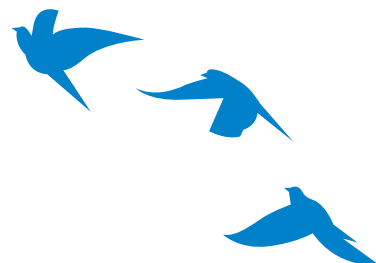
Operations Manager of Allied Health

### Danielle Blewett

Community Engagement & Fundraising

### Jim Sullivan

Information Technology & Communication Services





# From the Chief Executive and Chairman...

---

**It is at times of adversity that the true capabilities and spirit of people really show through.**

Our adversity stems from the confluent pressures of changing from our known and proven operating environment of nearly 79 years to the new and unknown world we enter under the NDIS coupled with the ever present desire to continue to put the wellbeing of those that seek our support at the very forefront.

With 30 June 2016 marking the end of the three year NDIS trial in Tasmania we are now diving headlong into the scheme proper.

Everyone and everything including our staff, our finances, our ingenuity, our relevance, our services and our supporters continue to be challenged. Even our clients are at times being challenged as it is all very new to them as well.

Through the three years of trial it is fair to say that both our clients and we have ridden a kaleidoscope of emotions ranging from joy to excitement to satisfaction and to frustration.

As we get closer and closer to the pointy end it becomes more and more apparent that the St Giles way of "being everything to everyone" and always finding a way is becoming increasingly difficult to maintain.

Never has the power of working together been more evident. Through the combined effort of all the wonderful staff and supporters at St Giles we are meeting our challenges head on.

Whilst it is at times easy to do so we should not lose sight of the fact that a large part of what we do today remains outside the scope of the NDIS. This will change progressively over time. We continue to support the thousands of children who come through our doors each year who are not yet eligible for the scheme or may never ever be so. We continue to provide highly skilled and innovative seating and equipment services to meet the complex needs of many people. We continue to provide outreach services to those people who cannot get to our major cities. We continue to provide services and support to the various aspects of the health system which need our expertise such as the paediatric rehabilitation service. We continue to operate one of the coolest Toy Libraries going around. We continue to win accolades for the innovative use of technological solutions. We continue to forge strong relationships and engage with other organisations to explore new ways, to enhance service delivery and to help them with their aspirations.

Our Vision Statement contemplates us being the acknowledged leader



*(recognised and understood by children, families, adults, our peers, Government and the wider community) in helping Tasmanians (supporting individuals and families and working collaboratively with community and business partners and other service providers) live to their full potential (achieving best outcomes and quality of life).*

Despite all that is happening around us we remain comfortable that we are realising our vision and will continue to do so for many years to come.

As we have previously acknowledged the most powerful aspect of the NDIS is its inherent ability to change the lives of people living with disability. It puts a value on their contribution to our society. Whilst the scheme will ultimately provide the necessary framework to encourage this the long term success or otherwise will be dependent on us as a community. Allowing the access to the resources and relations that make life healthy, happy and productive necessary for true social inclusion. Regardless of what systems are in place true inclusion will not be achieved unless our community as a whole allows it to occur. Once again we urge you all to ensure that as you go about your daily lives that the right of everyone to be treated equally and with respect is evident in all you do.

Finding ways to thank the community for the quantum, quality and continuity of support that it gives to St Giles and the families we support gets harder every year. Harder because the extent of that unwavering support is truly humbling. The best way we know how is to continue to ensure we engage regularly and give back to our community. Our very successful and highly anticipated Niche markets

and the iKnow Trivia night continue to be great fun. The Balfour Burn and Walk with Me, whilst providing good fundraising avenues, more importantly are providing a vehicle to foster and promote social inclusion. Last year's "one off" success story, the Black Diamond Dinner was, after much arm twisting, run and won again this year. The night was again enjoyed by all and yes there was a rabbit again but this one managed not to hop off unexpectedly. December will see us host a children's Christmas party which will also incorporate Walk with Me at Government House in Hobart. A new and exciting event which will bring something Launceston has never seen before is firmly on the drawing board for next year.

To those who choose to support us through direct philanthropy your generosity never ceases to amaze us. A heartfelt thank you to you all.



The secret to the success of St Giles is that it continues to be a sum of its parts. Overseeing all of those parts and ensuring that the right ingredients continue to be in place to foster an environment where by working together everyone achieves more is our Board. This year has seen our transition of Chairman after a fixed three year period of service by John Dent. John brought an honest and a utilitarian approach to his role. John was always hands on and displayed a willingness to get those hands dirty when circumstances called for it. His considered and practical advice was always well received by all those who sought his help. St Giles owes John a lot for his steady hand through a very turbulent period of change.

The past year has also seen the retirement from our board of Justice Robert Pearce. Justice Pearce was a

dedicated board member for over 20 years and we thank him for his significant contribution over such a long period of time.

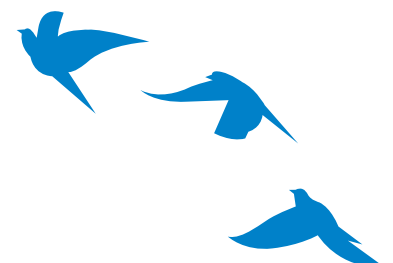
For the past 22 years St Giles has operated as an incorporated association after having been a company limited by guarantee for the 56 years prior to that. In keeping with contemporary practices and the new operating environment the Board has recognised the need to modernising our structure. In coming months we will be converting to a company limited by guarantee. Our new formal name will be St Giles Society Limited but we will continue to be known simply as St Giles.

The past twelve months have been challenging but rewarding for all of us at St Giles and we are nicely positioned to ensure the next twelve are just as rewarding.



Martin Rees  
**Chairman**

Ian Wright  
**Chief Executive**



# Meeting agenda

## 1. Welcome

Welcome by Mayor of Launceston, Alderman Albert van Zetten and President ex Officio of St Giles who will chair today's meeting.

## 2. Notice of Meeting

The notice of meeting will be taken as read, as published in The Mercury newspaper on Saturday 24th September 2016 and The Examiner and The Advocate Newspapers on Wednesday 28th September 2016.

**Venue:** The Town Hall Reception Room, Launceston

**Date:** Thursday October 27, 2016

**Time:** 2pm

**RSVP:** by October 21: 6345 7333 or suemedcraft@stgiles.org.au

Members and guests are invited to attend our 2016 AGM. The Chairman will present the Annual Report and Financial Statements. Our 2016 Supporters will also be acknowledged. The meeting will be chaired by St Giles President, Ald. Albert van Zetten, Mayor of Launceston. Nominations to the Board of Directors on the prescribed form, available from St Giles, are to be lodged with the Chief Executive no later than 5pm Friday October 14, 2016.

**I.R. Wright**

**Chief Executive**

## 3. Apologies

A list of apologies as at the date of the meeting will be tabled. Additional apologies may be presented.

Recommendation .. AGM-2016-01

"That apologies per list and any as recorded be accepted."

## 4. Minutes

Recommendation .. AGM-2016-02

"That the Minutes of the St Giles Annual General Meeting held on Wednesday 21st October 2015, having been passed as a true

record by the St Giles Board of Directors on Monday 26th October 2015, be now endorsed"

## 5. StGiles Report and Audited Financial Statement

Presented by Martin Rees Chairman and supported by Ben Coull, Director of Finance

Recommendation .. AGM-2016-03

"That the St Giles Report and Audited Financial Statements for the year end 30th June 2016, be adopted."

## 6. Election of Directors

Recommendation .. AGM-2016-04

"There being 4 vacancies and 4 nominations, the following are declared elected as Director of the St Giles Board for a 3 year term"

- Mr Ben Coull
- Mr Mike Lichtendonk
- Mr James McKee
- Dr Rebecca Kelly

## 7. Staff Presentation

Ms Kathryn Fordyce, Manager of The Autism Specific Early Learning and Care Centre (ASELCC) located in Burnie Tasmania and operated by St Giles.

## 8. Award Presentations

Director Ben Coull and Alderman Albert van Zetten to present the awards.

- Grassroots
- Volunteers and Supporters
- Bronze Supporters
- Silver Supporters
- Gold Supporters
- Platinum Supporters

## 9. General Business – at notice

- Nil



# 2016 Supporters

## Platinum

Commercial Travellers Association  
of Tasmania  
Melvie Bennett (Estate)  
Norman Findlay (Estate)  
Woolworths

## Gold

Bruce Wall Trust  
CBA Community Grants  
Event Avenue  
June Bramich  
Kathleen Mary Clark (Estate)  
Matsons Catering  
Novaro's Restaurant  
Paul Stephen Burgess (Estate)  
Seed Grading Association  
Weeding Hire

## Silver

AT+M  
Australian Lions Club Mobility  
Foundation Tas  
Australian Women of the Year  
Association  
Brown Brothers  
Chee Yong  
Mrs Julie and Dr Don Clark  
Eden Foods Pt Ltd  
Henry Foster  
Greg Crick  
Harrison Humphreys Pty Ltd  
Henry Abbott (Estate)  
Hugh Denny  
Motors Launceston  
Robert Fergusson Family Foundation  
Southern Cross Television  
Susan Routley  
St Patricks College Students  
Tamar Valley Truffles  
Tasmanian Police Charity Trust  
Tasmanian Chemist Golf Club  
Tasmanian Independent Retailers  
The Examiner Newspaper

ToxFree

## Bronze

Aromas Café  
BM Vaughan  
Behind the Door  
Birdie Buttons  
Birchalls  
Elaia Café  
Embroiderers Guild of Tasmania  
Harry Vos  
Helen O'Byrne  
Hudson Civil Products  
Kyeema Seafoods  
Motorcycle Riders Association  
Michael Morris  
Michael Vos  
Norwood IGA  
Red Bird Design  
Rob Burnett Photography  
St Johns Anglican Church  
Sarah and Steve Barrington  
WA Cromarty &Co Pty Ltd  
SRT Logistics

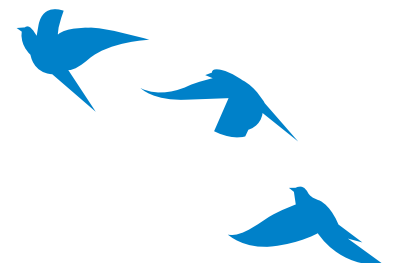
## Volunteers and Supporters

Alan Kevan  
Andrew Murray  
Anne Sands  
All Action Fitness  
Barry Murray  
Ben Winwood  
Carol Webb  
Craig and Tina Boon  
Damien Brown  
David Jackson  
Helen Johnson  
Janice Mallinson  
Janis Webberley  
Jenny Stewart  
Justin Lee  
Karen Yates  
Kevin Edwards  
Liz Crampton  
Lyn Dent

Military Mumma  
Neville Bowden  
Rachel Williams  
Richard Murtough  
Roslyn Wilson  
Rotary Club of Launceston  
Susan Fowler  
Susan Harman  
Sally Joseph  
Sam Woolcock  
Valerie Bird  
Westpac Brisbane Street

## Grassroots

Kirri-Lee Brazendale  
David Anderson  
Angel Gowns Australia  
Inspector Michael Johnston  
Luke Good  
Lynda McKay  
Mark Baker  
Mrs Frances Underwood  
Peter West  
Raw Challenge Tasmania  
Giles Wing



# 77th Annual General Meeting 2015

---

## Minutes

Date: Wednesday, 21st  
October 2015  
Time: 2.00pm  
Venue: Reception Room,  
Launceston Town Hall  
Minute Taker: Sue Medcraft

## 1. Welcome

Alderman Albert van Zetten, Mayor of Launceston and President of St Giles warmly welcomed members, supporters, staff and guests to the meeting.

## 2. Notice of Meeting

The notice of meeting as published in The Examiner Newspaper and the Mercury Newspaper on Saturday 19th September 2015 was taken as read and noted.

## 3. Attendance and Apologies:

### ATTENDANCE

#### President:-

Alderman Albert van Zetten, Mayor of Launceston and President of St Giles.

#### Directors:-

John Dent (Chair), Ben Coull (Director of Finance), Martin Rees (Deputy Chair), Mike Lichtendonk, James McKee, Anne Gott

#### Staff:-

Ian Wright, Danielle Blewett, Philip Lynch, Ally White, Amanda Bailey, Claire Tonks, Sue Medcraft, Angela Towns, Ashleigh Billingham, Lindy Conway, Claudia de Ruiter, Sally

Crates, Simon Tonks, Claire Tonks, Nadine Davies, Anna Flittner, Lucy Millwood

#### Members and Guests:-

The Premier Hon Will Hodgman, The Treasurer Hon Peter Gutwein, Angela Williamson-Premier's Advisor, Andrea Dawkins MP, Rosemary Armitage MLC, Tania V Rattray MLC, Michelle O'Byrne Tas Labour Party, Helen Davis-Office of Andrew Nikolic, Angela Derryl Hill, Janice Cartwright, Don Thomas, Dennis Grimes, Mary Fergusson, Paul Dennis, Jo Dennis, Dale Luttrell, Chee Yong, David Jackson, Sally Jackson, David Stephenson, Margot Smart, Paige Woods, Alan Kevan, David Peck, Eddie Mallinson, Daniel Newton, Theraze Deegan, John Newson, Madeline Logan, Phil Paine, Inspector Michael Johnston, Craig Boon, Glenn Rainsford, Darrin Geard, Michael Howard, Janine Healey, Joy van Namen, Ross Nicholson, Bill Dobson, Maureen Street, Richard Murtough, Fiona Harris, John Kennedy, Ben Winwood

#### APOLOGIES:

Members of the House of Representatives

Hon Malcolm Turnbull MP-Prime Minister, Hon Christian Porter MP Minister for Social Services, Jenny Macklin MP; Hon Julie Collins MP, Hon Eric Hutchinson MP, Hon Andrew Nikolic AM CSC MP, Hon Brett Whiteley MP, Hon Andrew Wilkie MP

#### Senators

Hon Eric Abetz, Catryna Bilyk, Carol Brown, David Bushby, Hon Richard





held at The Town Hall, Launceston on Wednesday 21st October 2015 at 2.00pm

Colbeck, Jacqui Lambie, Stephen Parry, Helen Polley, Hon Lisa Singh, Anne Urquhart, Peter Whish-Wilson

### House of Assembly

Hon Elise Archer, Scott Bacon, Guy Barnett, Adam Brooks, Sarah Courtney, Andrea Dawkins, Hon Michael Ferguson, Lara Giddings, Hon Bryan Green, Hon Matthew Groom, Hon Paul Harriss, Hon Rene Hidding, Roger Jaensch, Hon David Llewellyn, Nick McKim, Cassy O'Connor, Madeleine Ogilvie, Hon Jacquie Petrusma, Hon Jeremy Rockliff, Joan Rylah, Mark Shelton, Rebecca White, Rosalie Woodruff

### Legislative Council

Hon Robert Armstrong, Hon Ivan Dean, Hon Craig Farrell, Hon Kerry Finch, Hon Ruth Forrest, Hon Michael Gaffney, Hon Vanessa Goodwin, Hon Greg Hall, Hon Leonie Hiscutt, Hon Tony Mulder, Hon Adriana Taylor, Hon Rob Valentine, Hon J Wilkinson

### Members and Supporters

Arthur Dobson-Director; Kym Goodes-Director; Robert Pearce-Director, Tiina Sexton-Director, Donna Bain-Self Help Workplace, Steve Daley-Devonfield, Sue Ham-NDIA, Michael Morrison, Brian and Wendy Faulkner, Greg Reid, David Clements-NDS Tasmania, Ian Brown-Clarence Plains CFC, Denise Brazendale-Mission Aust, Scott Seabrook-Dept Social Services, Roma Fenton, Carol Webb, Trudy Pearce-Learning Services North, Roslyn Wilson, Gabbi & Joe Murrell-Event Avenue, Gus Green, Palliative Care Services, Mark & Leanne Colson-Norwood IGA, Mary

Irby; Susan Routley, Tamar Valley Truffles, June Bramich, Weeding Hire, Rick Marton, Sam Ralph-All Action Fitness, Scott Murchison-The Pasta Merchant, Gladys Otten, Tim and Patrice Fowler-Sharpe & Fowler Eyecare, Henry Foster, Hugh Denny, Neville Bowden, Jenny Stewart, Ken and Jane Short, Helen O'Byrne, Don Stewart, Sarah Hooper-Novaros, Mrs Jacqueline Horne, Dane Waldren-Godfrey Pembroke, Michael Goss, Jo Palmer, James-Dick Smith Tasmania, Alderman Danny Gibson, Angela Walsh-LCC, Colin Cahoon-Country Club Tas Staff Community Fund

### Resolution: SGS AGM – 2015 – 1

“That apologies as listed on separate document and additional apologies as advised at the meeting be accepted”

*Moved:* Margot Smart;  
*Seconded:* James McKee

### 4. Minutes of the 2014 Annual General Meeting

#### Resolution: SGS AGM – 2015 – 2

“That Minutes of the St Giles 76th Annual General Meeting held on Wednesday 22nd October 2014, having been passed as a true record by the St Giles Board of Directors on 10th November 2014 be now endorsed.”

*Moved:* Mike Lichtendonk;  
*Seconded:* Ben Coull

### 5. Annual Report and Financial Statements:

John Dent, Chairman of the Board of St Giles presented the 77th Annual Report and Audited Financial Statements for the year ended 30th June, 2015

**Resolution:** SGS AGM – 2015 – 3  
“That the **2014 Annual Report and Audited Financial Statements** be adopted.”

*Moved:* John Dent;  
*Seconded:* Martin Rees

### 6. Election of Directors

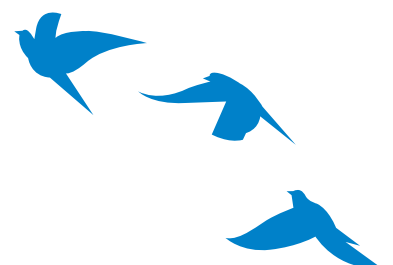
Nominations for positions to the Board of Directors closed on 9th October 2015

Resolution: SGS AGM – 2015 – 4

“There being one vacancy on the Board, the re-election of Martin Rees as a Director for a further three year term was confirmed

### 7. Guest Presentation

John Dent introduced guest speaker and staff member, Claire Tonks who gave an informative account of her staff exchange experience with the Easter Seals Blake Foundation in Tucson Arizona made available through St Giles Society membership of Ability First Australia and its relationship with American based not for profit organization Easter Seals, being a community-based health agency dedicated to helping children and adults with disabilities.



---

## 8. Presentation of 2015 Supporter Awards:

John Dent, together with Alderman van Zetten presented the 2015 Supporters Awards

### GRASSROOTS AWARD

Andrew Nikolic AM CSC MP  
Senator Carol Brown  
Hon Senator Eric Abetz  
Hon Jenny Macklin  
Hon Jacquie Petrusma MP  
Inspector Michael Johnston  
Hon Elise Archer MP  
Denis Grimes

### VOLUNTEER AWARD

Alan Kevan  
All Action Fitness  
Andrew Murray  
Ben Winwood  
Carol Webb  
Craig and Tina Boon  
David Jackson  
Dominic Monypenny  
Helen and Mel Johnson  
James Read  
Jo Palmer

Jenny Stewart  
Justin Lee  
Karen Yates  
Leighton Groeneveld  
Maureen Street  
Michael Bok  
Michael Maney  
Military Mumma  
Neville Bowden  
Paige Woods  
Rapid Relief Team  
Richard Murtough  
Rick Martin  
Roslyn Wilson  
Rotary Club of Launceston  
Sally Stancombe  
Sam Woolcock  
Scott Murchson  
Westpac Brisbane Street

### BRONZE AWARD

Ann Podlesny  
Aromas Café  
Birchalls  
BM Vaughan  
Elaia Café  
Geoff Edmunds (Estate)  
Helen O'Byrne  
Hudson Civil Products



Inner Wheel Club of Kings Meadows  
Kmart  
Launceston Greyhound Racing Club  
Lions Club of Sandy Bay  
Mary Irby  
Nick Daking  
Norwood IGA  
Palliative Care Services  
Red Bird Design  
Rob Burnett Photography  
Sharpe & Fowler  
WA Cromarty Pty Ltd  
William and Penny Cromarty

## SILVER AWARD

Albert van Zetten  
Anna Wilson  
AT+M  
BlueLine Laundry Inc  
Brown Brothers  
CBA Community Grants  
Chee Yong  
Dick Smith  
Fiona & Jonty Barnett  
Foot & Playsted  
Henry Foster  
Gladys Otten  
Gus Green  
Harrison Humphreys Pty Ltd

Hugh Denny  
Johnson Breward and Brown  
Karen Bell  
Ken and Jane Short  
Launceston City Council  
Lions Club of Windmill Hill  
Mud Bar and Restaurant  
Order of the Eastern Star  
Robert Fergusson Family Foundation  
St Johns Anglican Church  
St Patricks College Student Council  
Toxfree  
Tamar Valley Truffles  
Tasmanian Independent Retailers  
Tasmanian Police Charity Trust

## GOLD AWARD

Bruce Wall Trust  
Country Club Staff Community Fund  
Event Avenue  
Greg Crick Honda  
June Bramich  
Lucy Millwood  
Matson Catering  
MyState Foundation  
Novaro's Restaurant  
Weedings Hire

## PLATINUM

Claude Whatley (Estate)  
Michael Vos  
NAM Findlay (Estate)  
Royal Australian Navy  
Woolworths Supermarkets

## 9. General Business – at notice

Nil

There being no further business the meeting closed at 2.30pm.

Afternoon tea followed.

Confirmed as a true record.

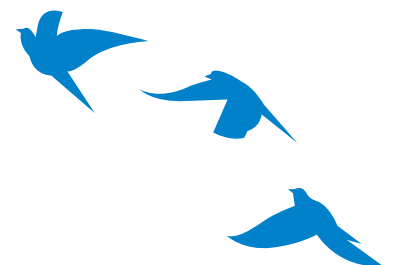


**CHAIRMAN, John Dent**



**CHIEF EXECUTIVE, Ian Wright**

Date: 26th October 2015



**Statement of Profit or Loss and Other Comprehensive Income**  
**For the Year Ended 30 June 2016**

	2016	2015
	\$	\$
<b>Operating Revenue</b>		
Fees	2,779,557	2,182,027
Government funding	12,186,434	11,423,273
Other operating revenue	135,879	129,792
<b>Total operating revenue</b>	<b>15,101,870</b>	<b>13,735,092</b>
<b>Operating Expenses</b>		
Administration	1,004,957	1,066,659
Client support services	370,545	378,765
Property & equipment expenses	383,355	346,716
Depreciation	691,230	592,616
Salary & wages	13,761,133	12,757,455
Staffing expenses	533,814	536,983
<b>Total operating expenses</b>	<b>16,745,034</b>	<b>15,679,194</b>
<b>Operating surplus / (deficit) for the year</b>	<b>(1,643,164)</b>	<b>(1,944,102)</b>
<b>Other Items</b>		
Capital grants	304,642	1,321,672
Fundraising	180,190	92,250
Bequests and donations	390,974	407,177
Interest & dividend income	121,217	132,517
Gain/(loss) on disposal of property, plant & equipment, and AFS financial assets	(4,255)	4,123
<b>Net other items</b>	<b>992,768</b>	<b>1,957,739</b>
<b>Surplus / (deficit) for the year</b>	<b>(650,396)</b>	<b>13,637</b>
<b>Other comprehensive income:</b>		
Loss on demolition of building	0	(342,500)
Loss on revaluation of land & buildings	(2,606,595)	0
Net changes in fair value of Available for Sale financial assets	(122,196)	83,812
<b>Other comprehensive income for the period</b>	<b>(2,728,791)</b>	<b>(258,688)</b>
<b>Total comprehensive income / (loss) for the period</b>	<b>(3,379,187)</b>	<b>(245,051)</b>



# Statement of Financial Position

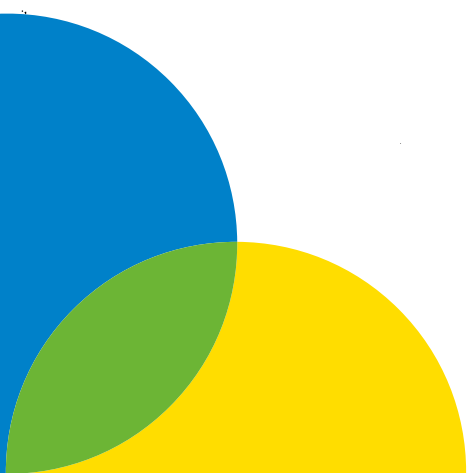
As at 30 June 2016

	2016	2015
	\$	\$
<b>ASSETS</b>		
<b>Current assets</b>		
Cash	147,127	104,335
Trade and other receivables	510,487	426,486
Investments	1,458,778	1,478,524
Inventories	71,579	71,579
<b>Total current assets</b>	<b>2,187,971</b>	<b>2,080,924</b>
<b>Non-current assets</b>		
Loans	150,000	150,000
Property, plant and equipment	16,252,304	19,280,796
<b>Total non-current assets</b>	<b>16,402,304</b>	<b>19,430,796</b>
<b>TOTAL ASSETS</b>	<b>18,590,275</b>	<b>21,511,720</b>
<b>LIABILITIES</b>		
<b>Current liabilities</b>		
Trade and other payables	858,604	983,234
Borrowings	1,498,213	1,024,247
Provisions	1,322,358	1,277,417
<b>Total current liabilities</b>	<b>3,679,175</b>	<b>3,284,898</b>
<b>Non-current liabilities</b>		
Borrowings	560,685	603,002
Long-term provisions	219,288	113,505
<b>Total non-current liabilities</b>	<b>779,973</b>	<b>716,507</b>
<b>TOTAL LIABILITIES</b>	<b>4,459,148</b>	<b>4,001,405</b>
<b>NET ASSETS</b>	<b>14,131,128</b>	<b>17,510,315</b>
<b>EQUITY</b>		
Retained earnings	13,097,132	13,934,647
Reserves	1,033,996	3,575,668
<b>TOTAL EQUITY</b>	<b>14,131,128</b>	<b>17,510,315</b>

## Statement of Changes in Equity

For the Year Ended 30 June 2016

	Retained Earnings	Reserves	Total
Balance at 1 July 2015	13,934,647	3,575,668	17,510,315
Net surplus/(deficit) for year	(650,396)	-	(650,396)
Other comprehensive income	-	(2,728,791)	(2,728,791)
Total comprehensive income for the year	(650,396)	(2,728,791)	(3,379,187)
Prior year transfer	(187,119)	187,119	-
<b>Balance at 30 June 2016</b>	<b>13,097,132</b>	<b>1,033,996</b>	<b>14,131,128</b>
Balance at 1 July 2014	14,332,362	3,423,004	17,755,366
Net surplus/(deficit) for year	13,637	-	13,637
Other comprehensive income	(342,500)	83,812	(258,688)
Total comprehensive income for the year	(328,863)	83,812	(245,051)
Prior year transfer	(68,852)	68,852	-
<b>Balance at 30 June 2015</b>	<b>13,934,647</b>	<b>3,575,668</b>	<b>17,510,315</b>



## Statement of Cash Flows

For the Year Ended 30 June 2016

	2016	2015
	\$	\$
<b>CASH FROM OPERATING ACTIVITIES:</b>		
Fees received	2,903,033	1,930,728
Payments to suppliers	(2,774,250)	(2,802,834)
Government funding received	13,284,579	12,718,129
Interest received	106,644	111,184
Employee benefits paid	(13,636,617)	(12,745,557)
GST remitted	(995,216)	(616,001)
Other Income	867,438	777,162
Net cash (used in) operating activities	<u>(244,389)</u>	<u>(627,189)</u>
<b>CASH FLOWS FROM INVESTING ACTIVITIES:</b>		
Proceeds from disposal of property, plant and equipment	11,000	12,700
Purchase of property, plant and equipment	(284,770)	(4,507,345)
Purchase of AFS investments	-	(269,963)
Proceeds from disposal of AFS investments	187,586	-
(Acquisition) / disposal of investments	(250,000)	141,628
Loans (advanced) / repaid	-	34,369
Net cash used in investing activities	<u>(336,184)</u>	<u>(4,588,611)</u>
<b>CASH FLOWS FROM FINANCING ACTIVITIES:</b>		
Proceeds of finance lease liabilities	(97,916)	(56,624)
Proceeds from Government funding for capital works	304,642	1,332,186
Repayment of bank loans	(27,576)	(23,758)
Net cash provided by financing activities	<u>179,150</u>	<u>1,251,804</u>
Net increase (decrease) in cash held	(401,423)	(3,963,996)
Cash and cash equivalents at beginning of year	(804,308)	3,159,688
Cash and cash equivalents at end of financial year	<u>(1,205,731)</u>	<u>(804,308)</u>

## St Giles Society Incorporated

### Directors' Declaration

For the year ended 30 June 2016

In the opinion of the Board of Directors, the financial statements and notes,

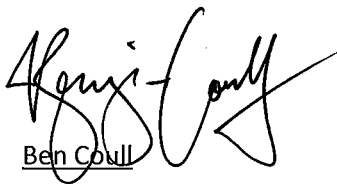
- (a) present fairly the financial position of St Giles Society Inc as at 30 June 2016 and the results and cash flows of the association for the year then ended;
- (b) have been prepared and presented in accordance with applicable Australian Accounting Standards and other mandatory professional reporting requirements; and
- (c) satisfy the requirements of the Associations Incorporation Act (Tasmania) 1964 to prepare accounts.

This statement is made in accordance with a resolution of the Board of Directors.



Martin Rees

Chair

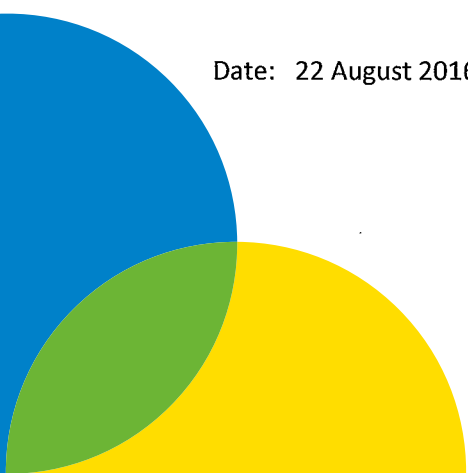


Ben Coull

Deputy Chair

Launceston

Date: 22 August 2016





ST GILES SOCIETY INC.

› Partners to rely on

**INDEPENDENT AUDITOR'S REPORT TO THE MEMBERS  
FOR THE YEAR ENDED 30 JUNE 2016**

**Report on the Financial Report**

I have audited the accompanying financial report of St Giles Society Inc (the association), which comprises the statement of financial position as at 30 June 2016, the statement of comprehensive income, statement of changes in equity and statement of cash flows for the year then ended, notes comprising a summary of significant accounting policies and other explanatory information, and the statement by the members of the board.

**Board's Responsibility for the Financial Report**

The directors' of the association are responsible for the preparation and fair presentation of the financial report in accordance with Australian Accounting Standards – Reduced Disclosure Requirements (including the Australian Accounting Interpretations) and the *Associations Incorporation Act (Tas) 1964* and for such internal control as the board determines is necessary to enable the preparation of the financial report that is free from material misstatement, whether due to fraud or error.

**Auditor's Responsibility**

My responsibility is to express an opinion on the financial report based on my audit. I conducted my audit in accordance with Australian Auditing Standards. Those standards require that I comply with relevant ethical requirements relating to audit engagements and plan and perform the audit to obtain reasonable assurance whether the financial report is free from material misstatement.

An audit involves performing procedures to obtain audit evidence about the amounts and disclosures in the financial report. The procedures selected depend on the auditor's judgment, including the assessment of the risks of material misstatement of the financial report, whether due to fraud or error. In making those risk assessments, the auditor considers internal control relevant to the entity's preparation of the financial report that gives a true and fair view in order to design audit procedures that are appropriate in the circumstances, but not for the purpose of expressing an opinion on the effectiveness of the entity's internal control. An audit also includes evaluating the appropriateness of accounting policies used and the reasonableness of accounting estimates made by the directors, as well as evaluating the overall presentation of the financial report.

I believe that the audit evidence I have obtained is sufficient and appropriate to provide a basis for my audit opinion.

**Auditor's Opinion**

In my opinion, the financial report of St Giles Society Inc is in accordance with the *Associations Incorporation Act (Tas) 1964*, including:

- i. giving a true and fair view of the association's financial position as at 30 June 2016 and of its performance for the year ended on that date; and
- ii. complying with Australian Accounting Standards – reduced disclosure requirements.

Ruddicks  
L Kimpton  
102 Tamar Street  
Launceston Tas 7250

Signed:



Date: 30 September 2016

robert j ruddick FCA  
craig a leighton FCA  
lyndal k kimpton CA



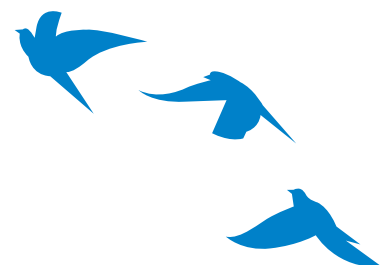
102 tamar street, po box 218, launceston, tasmania 7250  
t: 03 6331 3288 f: 03 6334 0275  
www.ruddicks.com.au e: mail@ruddicks.com.au





We invite you to join us for afternoon tea hosted by the Country Women's Association who have had an active involvement with St Giles since our foundation in 1937.

St Giles extends thanks to the East Launceston Branch of the CWA and to the Launceston City Council for making available their wonderful Reception Room for our Annual General Meeting.





**Launceston:**

65 Amy Road Newstead  
PO Box 416 Launceston TAS 7250  
Phone: 03 6345 7333  
Fax: 03 6345 7373  
Email: [society@stgiles.org.au](mailto:society@stgiles.org.au)

**Hobart:**

11a Gant Street Lenah Valley  
PO Box 45 New Town TAS 7008  
Phone: 03 6238 1888  
Email: [adminsouth@stgiles.org.au](mailto:adminsouth@stgiles.org.au)

